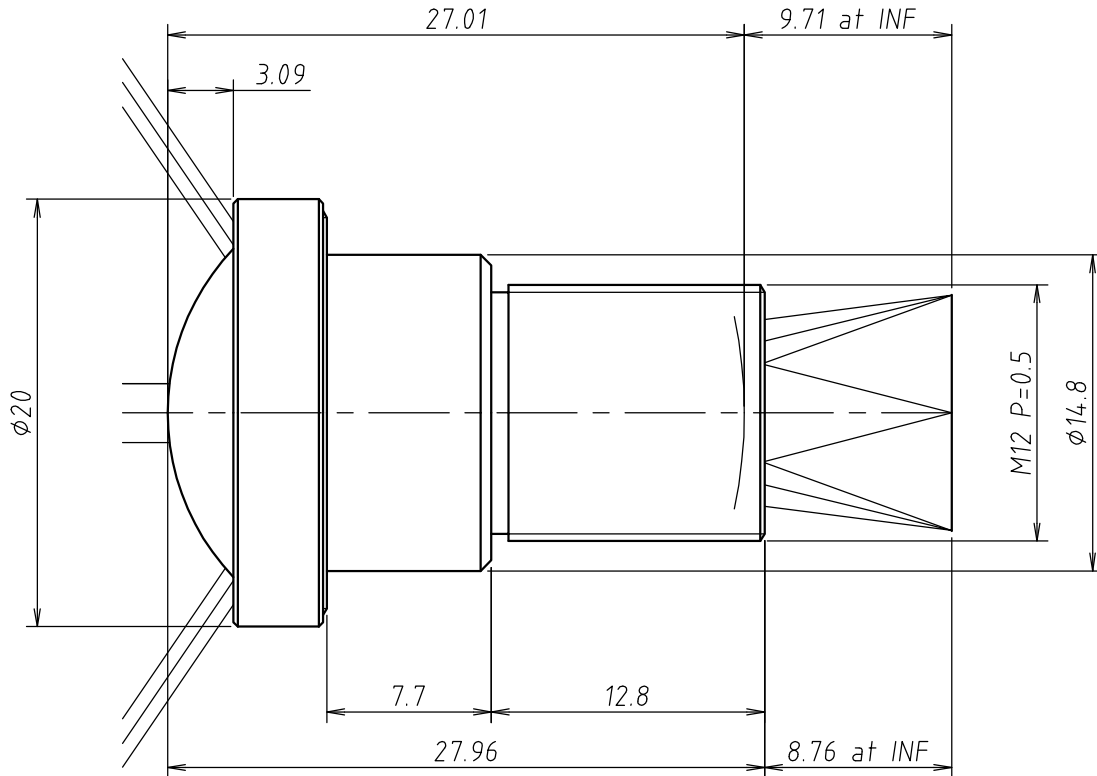


Lens Specification	
Focal length	5.5mm±5%
Back focal length	9.71mm±0.3mm at INF
Mechanical back	8.76mm±0.3mm at INF
Aperture ratio	F/2.0 ±5%
Image size	2/3" (6.6mm×8.8mm)
Magnification	-
Distortion	-31%
Angle of view at INF.	
Vertical	68.1°
Horizontal	90.1°
Diagonal	111.3°
Resolution	
Center	160LP/mm
Corner(70%)	63LP/mm
Pupil positions	
Entrance pupil	8.65mm (Front lens)
Exit pupil	-19.41mm (Image plane)
Principal points	
Object space	12.59mm (Front lens)
Image space	-5.5mm (Image plane)
Coating	
All surfaces are antireflection coated.	

Angle of view at INF.			
Image size		1/2" (4.8X6.4)	1/3" (3.6X4.8)
Vertical		49.8°	37.4°
Horizontal		66.1°	49.8°
Diagonal		82.2°	62.0°

Note:

The resolution stated above indicates  
the resolution at W.D.1000mm by design



**UNIVERSE KOGAKU(AMERICA), INC.**

116 Audrey Avenue, Oyster Bay, New York 11771  
Phone: (516)624-2444/Fax: (516)624-3109

△			TITLE	5.5mm F/2.0 2/3" S MOUNT LENS	DRAWN	K.S
△			P/NO.	VX055	SCALE	CHECKED
△					3:1	I.S
△			Mfg.NO.	VX055A-Y01-0	UOI	VX055
	03/13/2020				SHEET 1 OF 1	REV A