

Lens Specification

Focal length : 15.580mm ± 5%
 Back focal : 11.165mm ± 5%
 Mechanical back : 10.215mm ± 0.5mm at INF.
 Aperture ratio : F/1.6 ± 5%
 CCD size : 2/3" CCD (6.6 × 8.8)
 1/2" CCD (4.8 × 6.4)
 1/3" CCD (3.6 × 4.8)

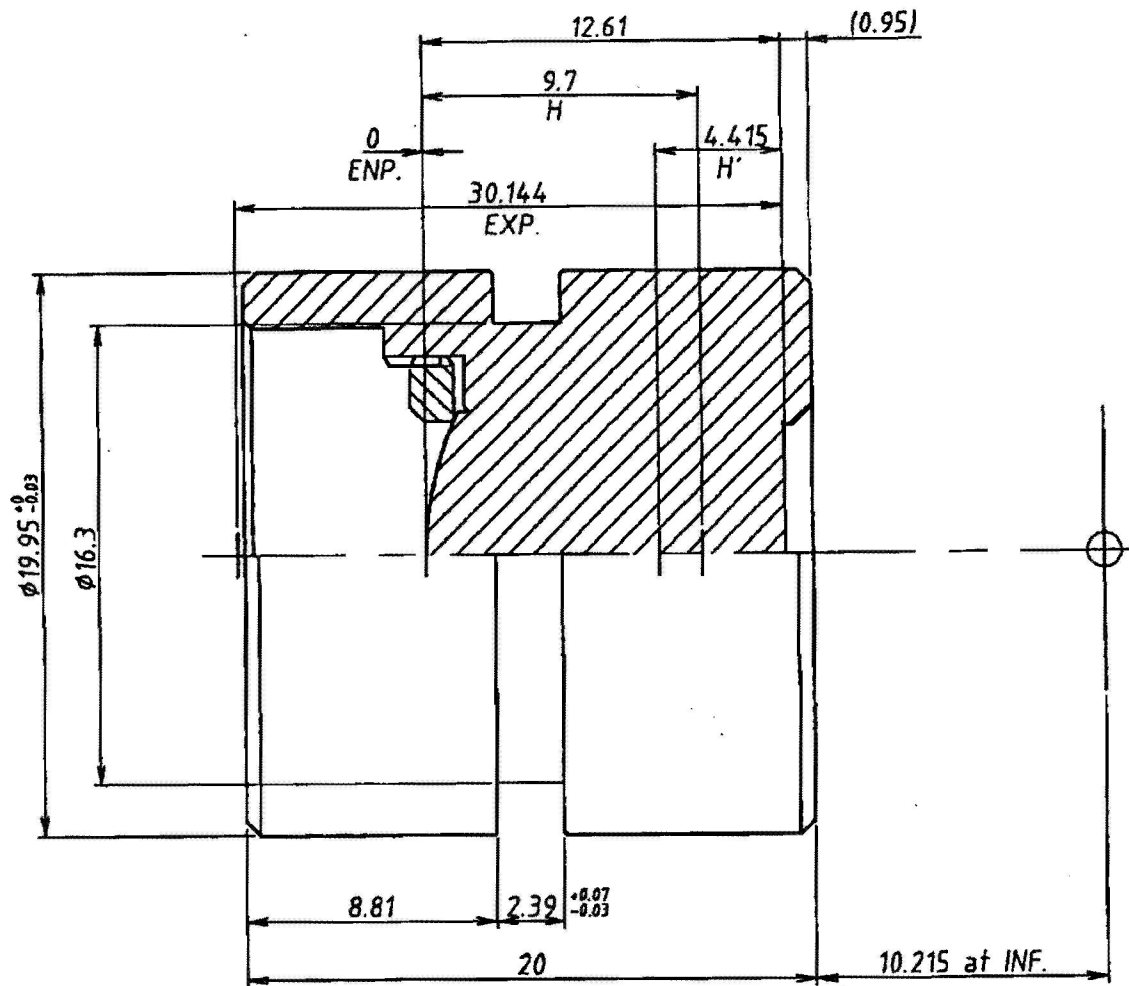
Angle of view

Image to object distance = Infinity

	2/3"	1/2"	1/3"
Diagonal	39.3°	29.0°	21.9°
Horizontal	31.8°	23.3°	17.6°
Vertical	24.0°	17.6°	13.2°

Aperture of front lens : $\phi 9.4$
 Aperture of rear lens : $\phi 9.0$

Coating : All surface are antireflection coated.
 (MgF2 single coat)
 ($\lambda = 550\text{nm}$)



UNIVERSE KOGAKU (AMERICA), INC.
 116 Audrey Avenue, Oyster Bay, New York 11771
 Phone: (516) 624-2444/Fax: (516) 624-3109

④		TITLE	15.5mm F/1.6 LENS	
③		P/NO.	PL-16B	
②		Mfg. NO.	SHEET 1 OF 1	REV A
①	4/25/03			