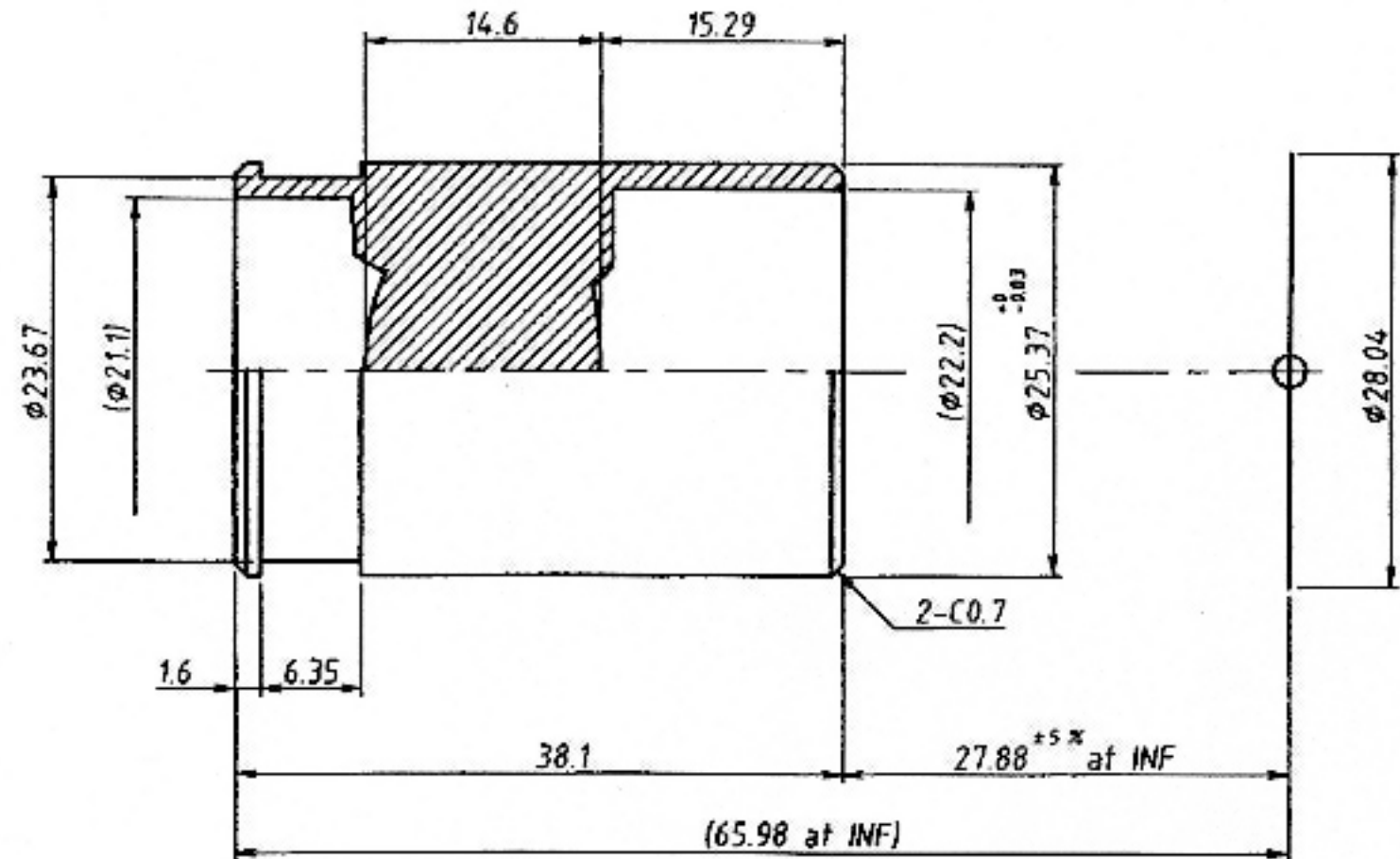


Lens Specification

Focal length : 53.56 mm±5% (546nm)
 Back focal : 43.18 mm±5%
 Mechanical back : 27.88 mm±5% at INF.

Aperture ratio : F/5.2 ±5% at INF
 Format size : $\phi 28.04$ mm
 Angle of view : 29.4°
 OPT. Distortion : -0.2% (Max)

Aperture of front lens : $\phi 12.2$
 Aperture of rear lens : $\phi 10.7$
 Coating : All surface are
 antireflection coated.
 (MgF2 single coat)
 ($\lambda = 550\text{nm}$)



UNIVERSE KOGAKU (AMERICA), INC.
 116 AUDREY AVENUE, OYSTER BAY, NEW YORK 11771
 PHONE: (516) 624-2444 FAX: (516) 624-3109

TITLE
 53.5mm F/5.2, LENS

DATE	SCALE	NO.	DRAWN
12/22/98	None	GLS-00003	APPROVED