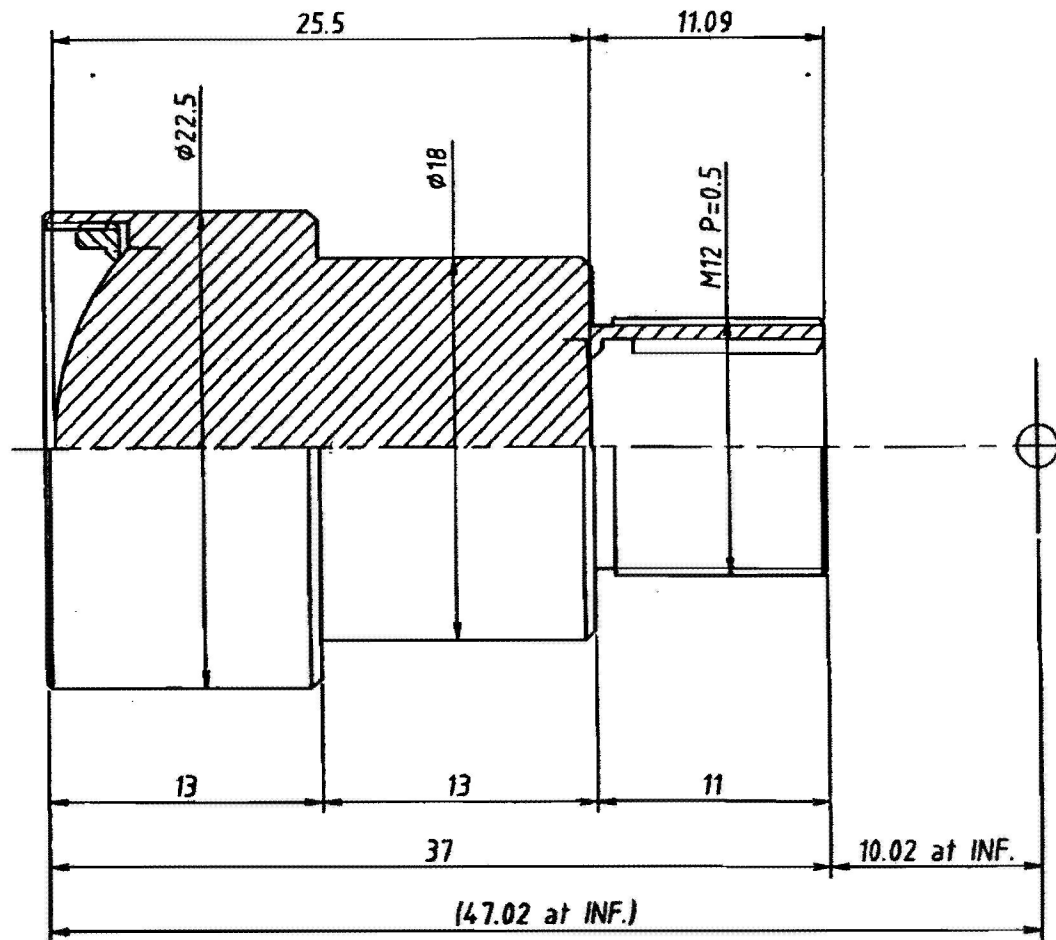


Lens Specification	
Focal length	49.97mm±5%
Back focal length	21.11mm±5%
Mechanical back	10.02±0.5mm
Aperture ratio	F/2.8±5%
Image size	1/3"(4.8mmx3.6mm)
Magnification	-
Distortion	0.2%
Angle of view at INF.	
Vertical	4.1°
Horizontal	5.5°
Diagonal	6.8°
Resolution	
Center	80LP/mm
Corner	50LP/mm
Pupil positions from the lens surface.	
Entrance pupil	0mm (Front lens)
Exit pupil	-49.3mm (Image plane)
Principal points from the lens surface.	
Object space	-0.77mm (Front lens)
Image space	-50.07mm (Image plane)
Coating (λ=546nm)	
All surfaces are antireflection coated. MgF2 single coated.	



NOTE

Image size : 2/3" 1/2"
 (8.8mmx6.6mm) (6.4mmx4.8mm)
 Distortion : 0.34% 0.25%
 Angle of view at INF.
 Vertical : 7.5° 5.5°
 Horizontal : 10.0° 7.3°
 Diagonal : 12.5° 9.1°



UNIVERSE KOGAKU (AMERICA), INC.
 116 Audrey Avenue, Oyster Bay, New York 11771
 Phone: (516) 624-2444/Fax: (516) 624-3109

④			TITLE	50mm F/2.8 CCD LENS		
③			P/NO.	C5028M12		
②			Mfg. NO.		SHEET 1 OF 1	REV A
①	9/09/03					