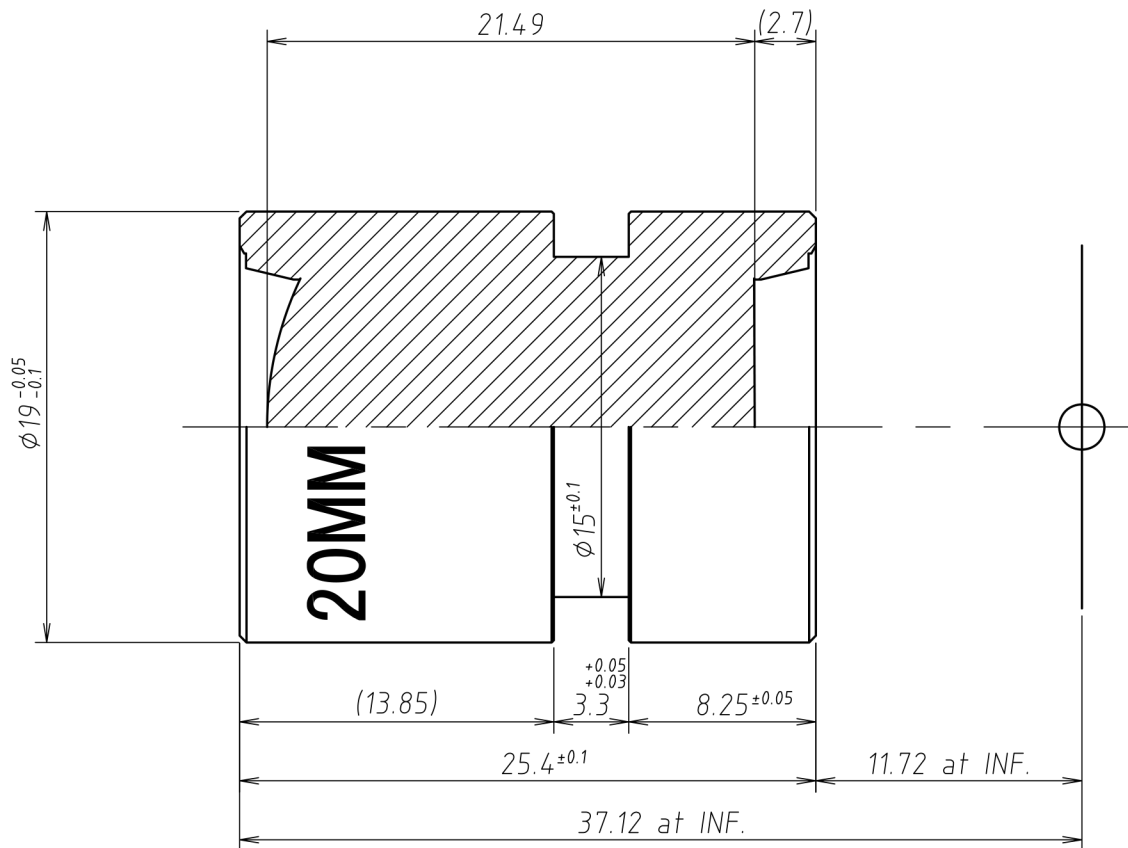


Lens Specification

Focal length	20.02mm±5%
Back focal length	14.42mm±5%
Mechanical back	11.72mm±0.3 at Inf.
Aperture ratio	F/2.8±5%
Image size	1"CCD(9.6X12.8)
Magnification	-
Distortion	-2.2%
Angle of view at INF.	
Vertical	27.2°
Horizontal	36.0°
Diagonal	44.5°
Resolution	
Center	14.0LP/mm
Corner	80LP/mm
Pupil positions	
Entrance pupil	11.99mm (Front lens)
Exit pupil	-36.53mm (Image plane)
Principal points	
Object space	21.02mm (Front lens)
Image space	-20.02mm (Image plane)
Coating (λ =546nm)	
All surfaces are antireflection coated. MgF2 single coated.	

Note:



ENGRAVE TEXT



(UOI P/N:CEM-20)



UNIVERSE KOGAKU (AMERICA), INC.  
116 Audrey Avenue, Oyster Bay, New York 11771  
Phone: (516)624-2444/Fax: (516)624-3109

△		TITLE	20mm F/2.8 CCD LENS		
△		P/NO.	C0019-D039		
△		Mfg.NO.	KR206A-Y01	SHEET 1 OF 1	REV A
△			10/28/2009		